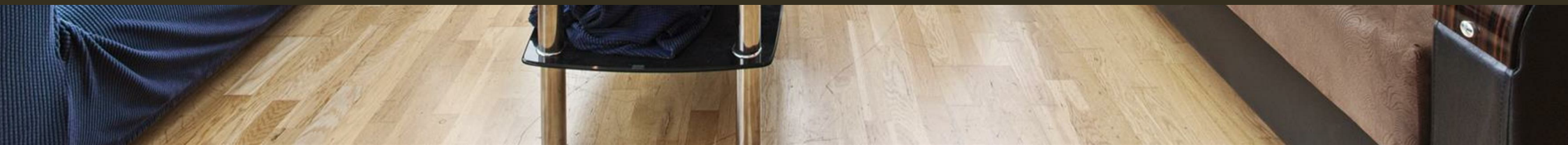




119 Newington Causeway, London  
SE1

GARTON JONES.COM



119 Newington Causeway, London  
, SE1

GARTON JONES.COM

9 Albert  
Embankment  
London  
SE1 7SP

Lettings:  
+44 (0) 20 7735 1888  
nineelms@gartonjones.com  
www.gartonjones.com

£550 Per Week

A bright, spacious, 2-bedroom, 1-bathroom apartment of 637sq.ft (59.2sq.m) available to rent in Metro Central Heights, a modern development situated moments from the tube links of the Elephant and Castle. The property is offered furnished and benefits from an open plan reception room with modern integrated kitchen, wood flooring throughout, two double bedrooms, bathroom, great storage, a 24hr concierge and access to a resident's leisure suite with swimming pool & gym. Metro Central Heights is very well located in Elephant & Castle, currently undergoing a major redevelopment including a range of trendy restaurants, cafes and bars at your doorstep and is moments from Elephant & Castle Overground and Tube Station providing very easy access around London.

Please note furniture may differ to that shown in the current photos.

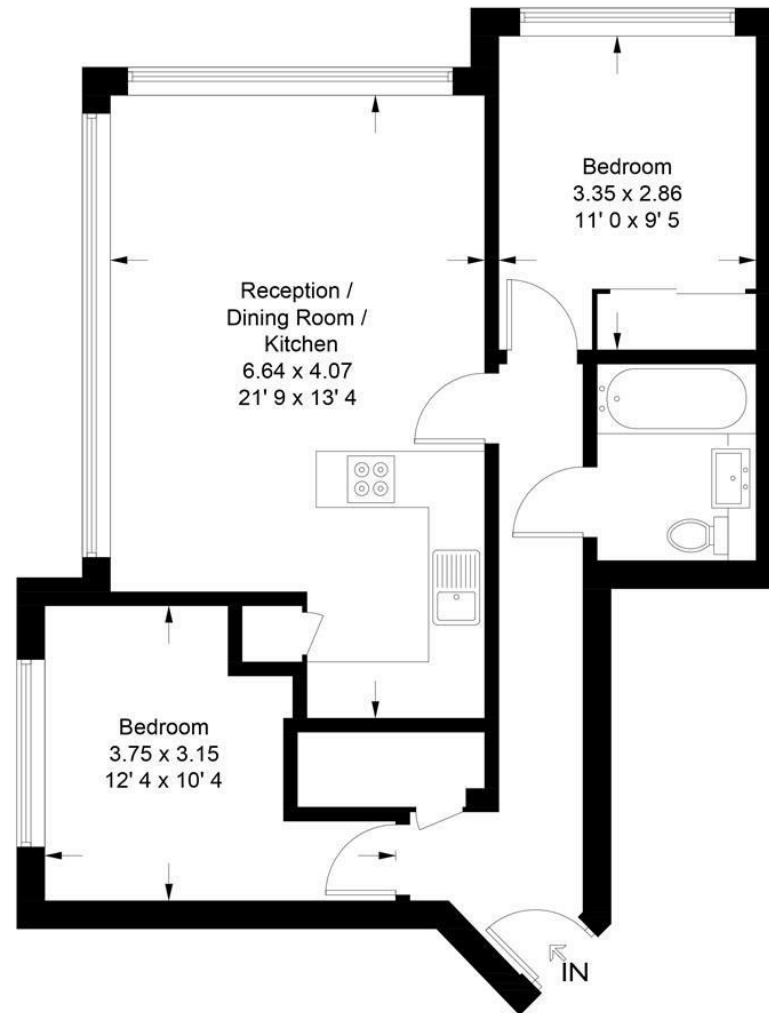
- Electricity Supply — Mains | Water Supply — Mains | Sewerage — Mains | Heating — Underfloor Heating
- Broadband: Check Coverage via Ofcom
- Mobile Signal: Check Coverage via Ofcom
- Parking: No Parking Included
- Lift Access
- Building Safety: EWS1 Available on Request
- Southwark Council Tax Band E
- 12 Month Minimum Term
- 5 Week Security Deposit
- EPC Band C (75)

- 537sq.ft (59.2sq.m)
- 2 Bedrooms
- Bathroom
- Open-Plan Reception Room
- Wooden Flooring Throughout
- Residents Gymnasium & Swimming Pool
- Moments From Elephant & Castle Tube Station
- Elephant Park Nearby Offers a Range of Cafes & Restaurants
- 24 Hour Concierge



### Metro Central Heights

Approximate Gross Internal Area = 637 sq ft / 59.2 sq m



Not to scale, for guidance only and must not be relied upon as a statement of fact  
All measurements and areas are approximate only and have been prepared in  
accordance with the current edition of the RICS Code of Measuring Practice

